

# Frachtvermessung 4.0



# Warum Frachtvermessung?

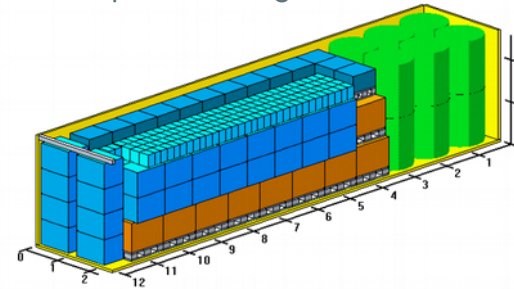
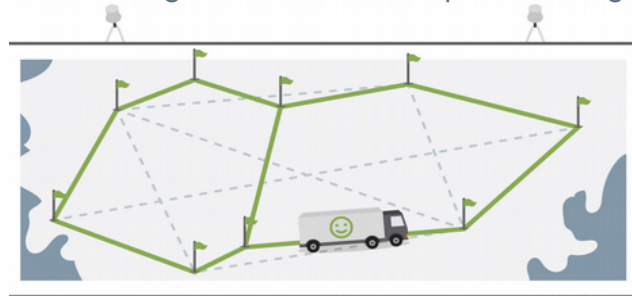


... identifiziert verlustbringende Paletten



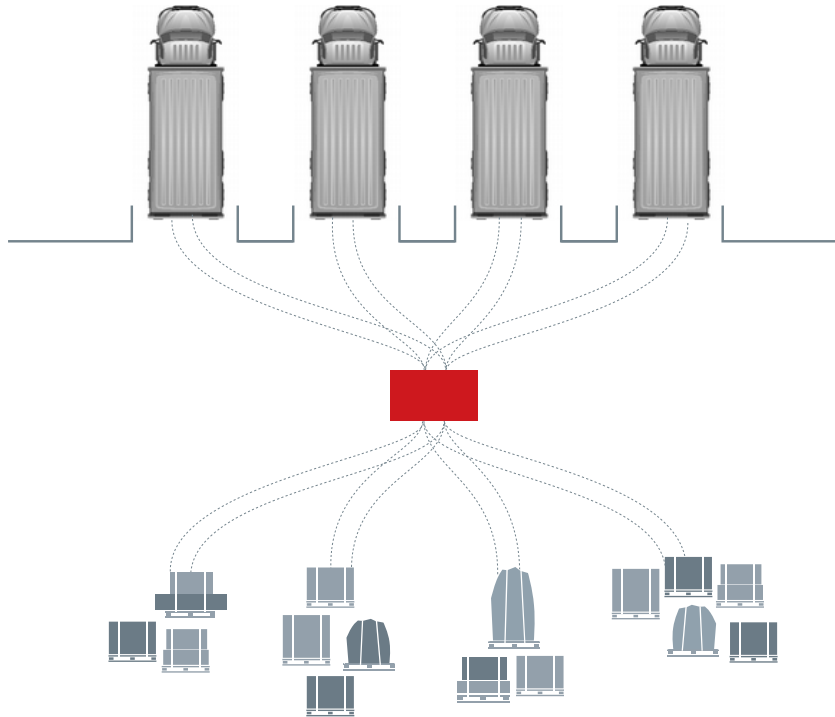
... dokumentiert die Ware

... ermöglicht Netzwerkoptimierung / Laderaumoptimierung





## Warum macht es nicht jeder?



### Statische – zentrale - Messung

- ▶ Stopp zur Messung notwendig
- ▶ Zeitfaktor – Messung dauert ca. 60 Sekunden (Fahrer und Fahrzeug sind beschäftigt)
- ▶ Platzbedarf für Anfahrtswege und Messstation
- ▶ Deshalb meist nur Stichprobenmessung



# Status quo der Frachtvermessung

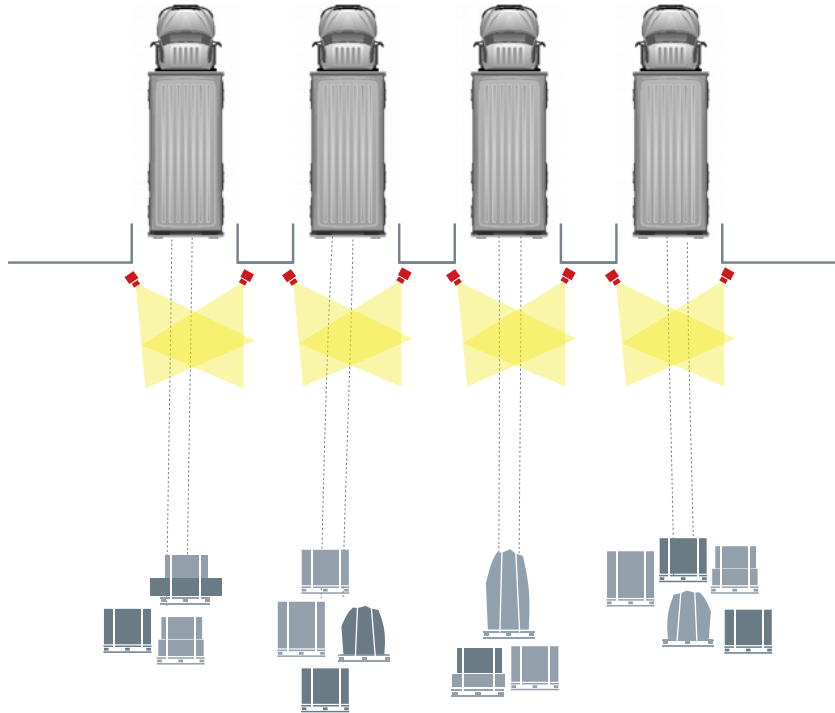


Statische Messung

... wenig Zeit, kein Platz, zu teuer



# Cargometer – Die Lösung : Frachtvermessung 4.0

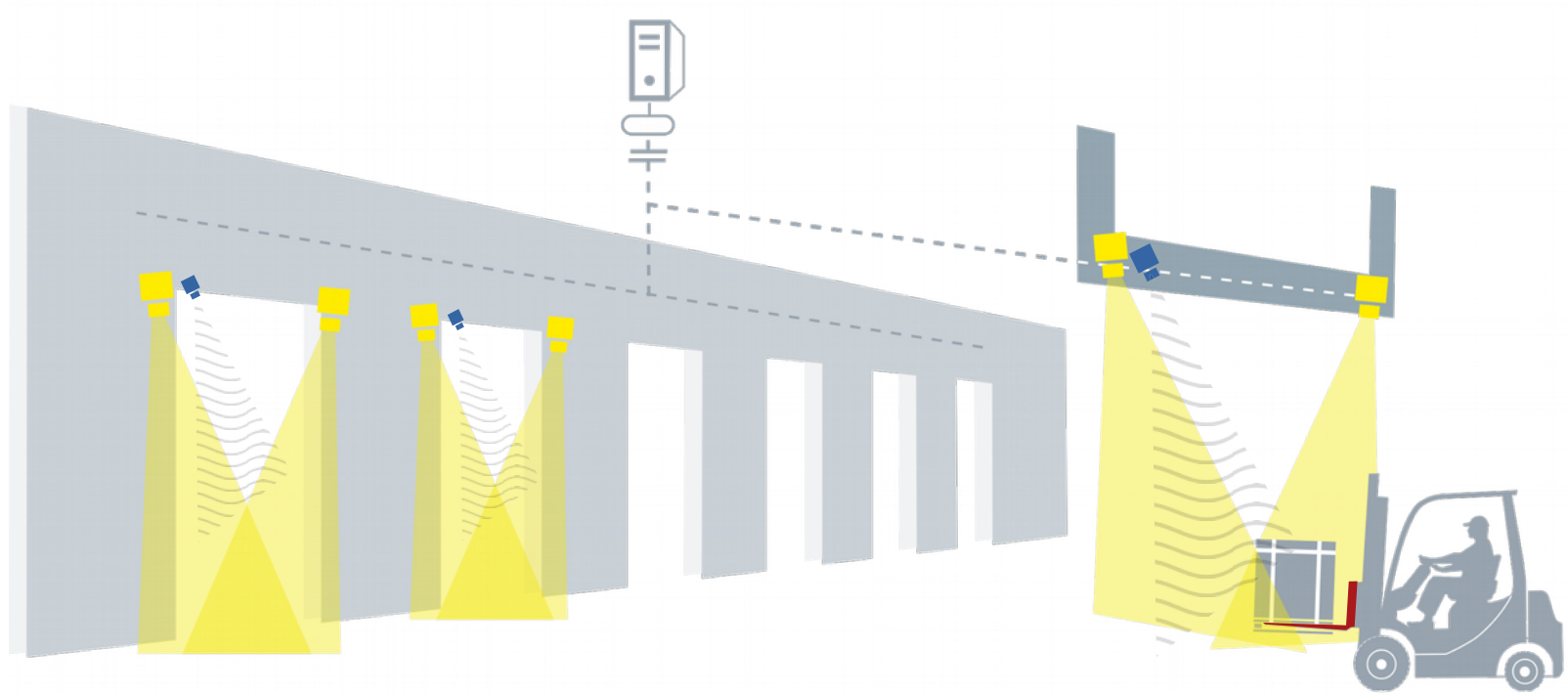


Dynamische – verteilte - Messung

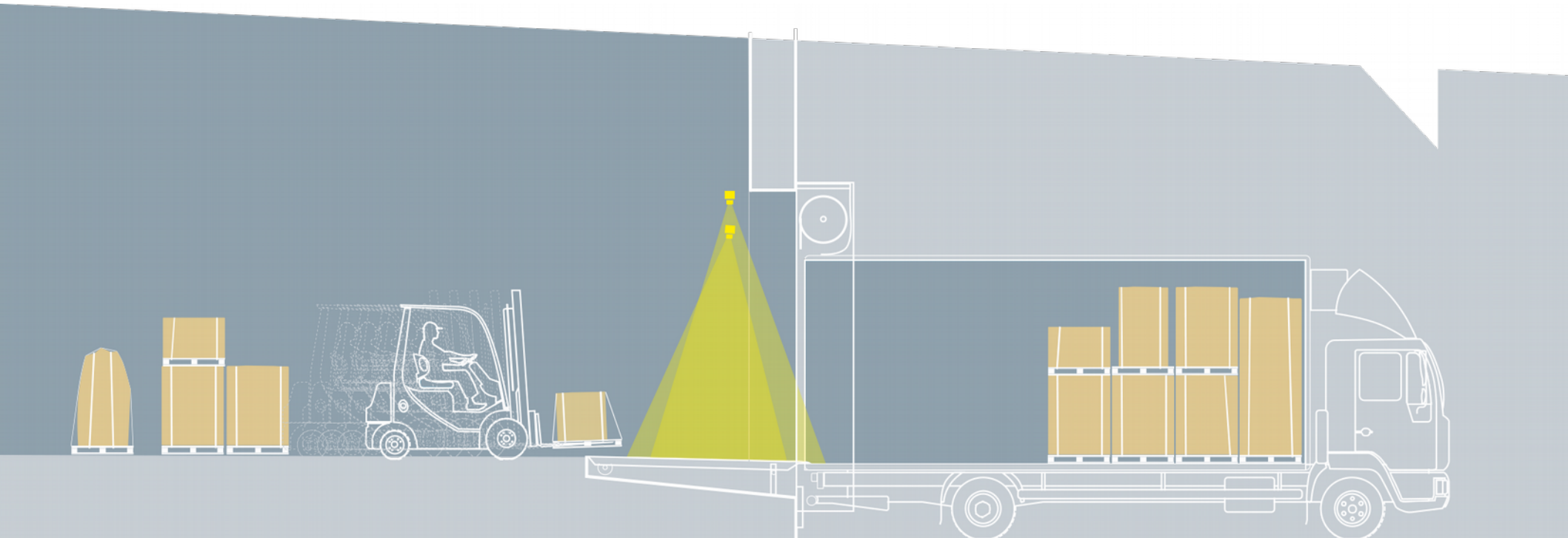
- ▶ Unterstützt bestehende Prozesse
- ▶ Vermessung, Verriegelung, Identifikation und Dokumentation des gesamten Frachtdurchsatzes



# Perfect Process Fit

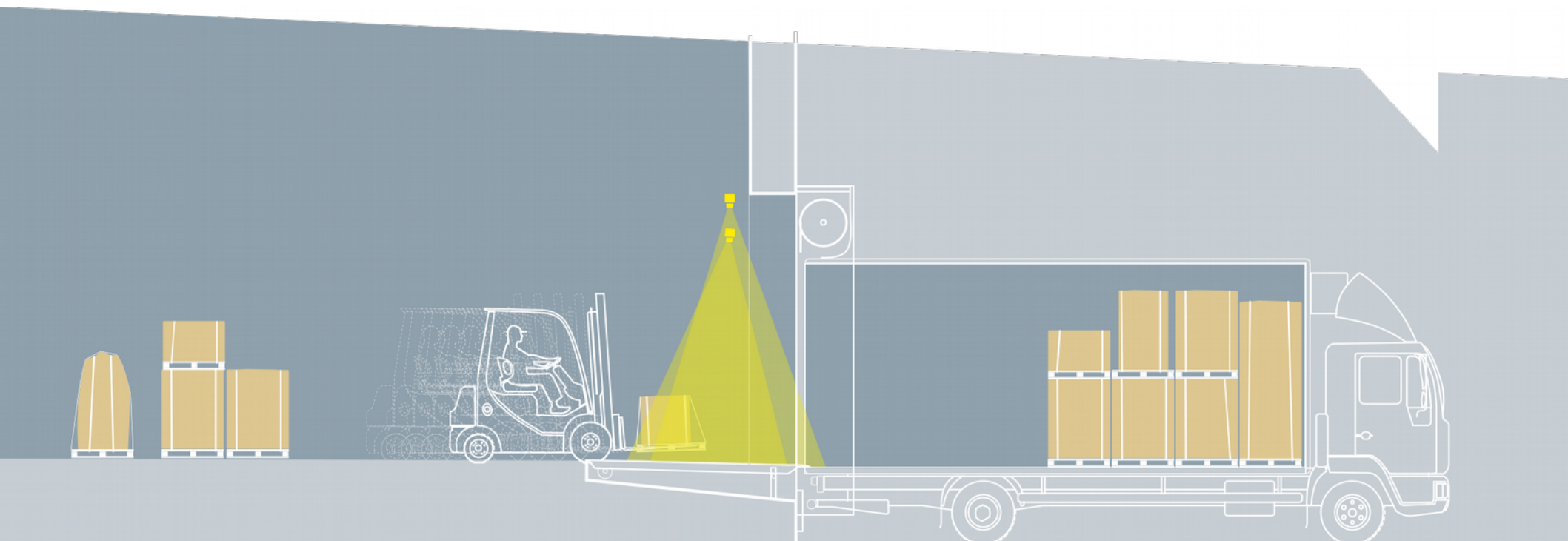


# CARGOMETER



„On-the-fly“ measurement

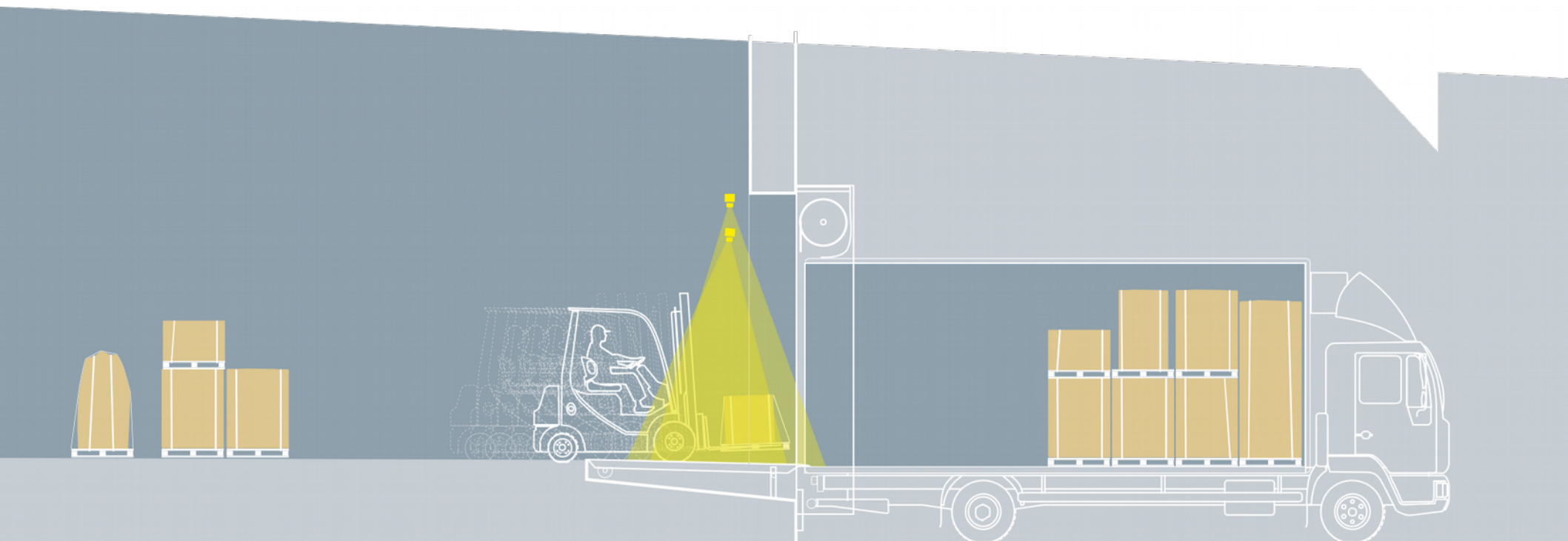
# CARGOMETER



„On-the-fly“ measurement

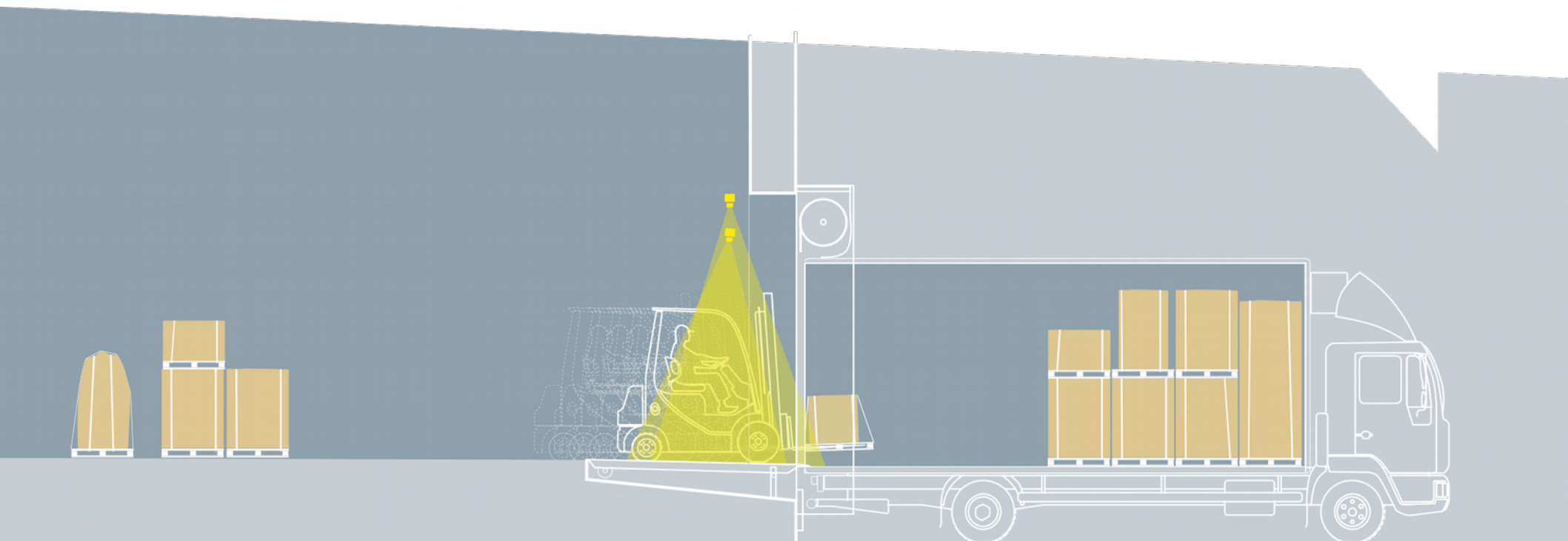


# CARGOMETER



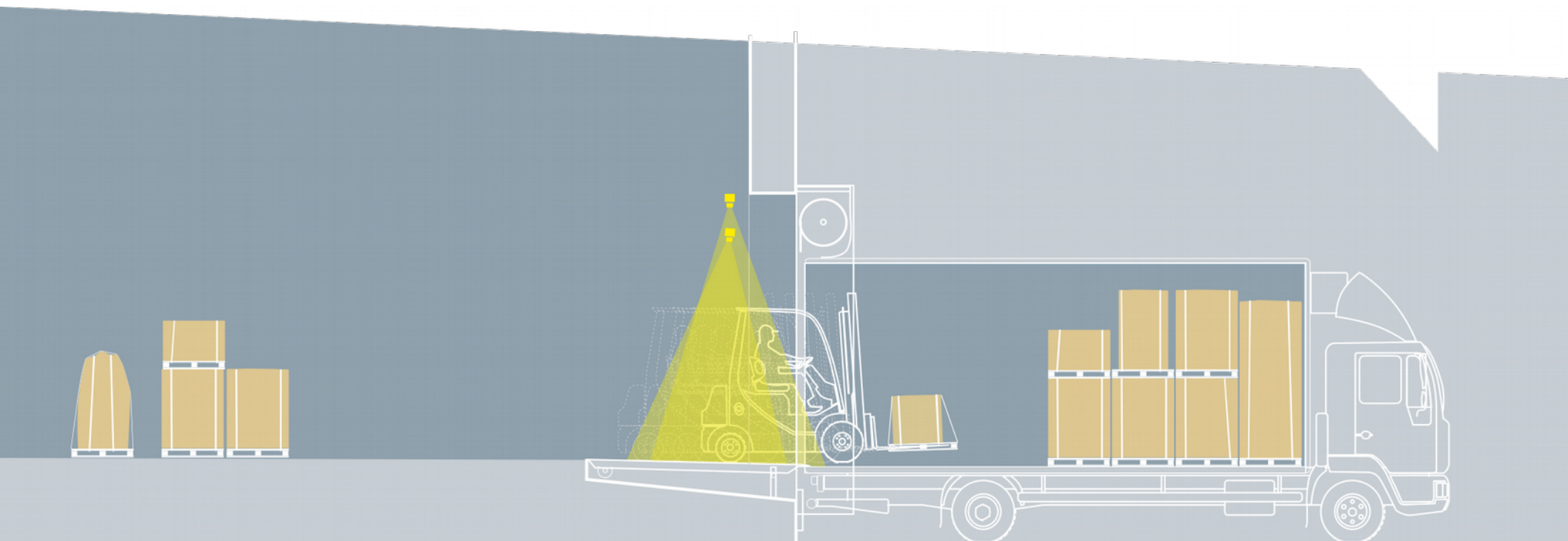
„On-the-fly“ measurement

# CARGOMETER



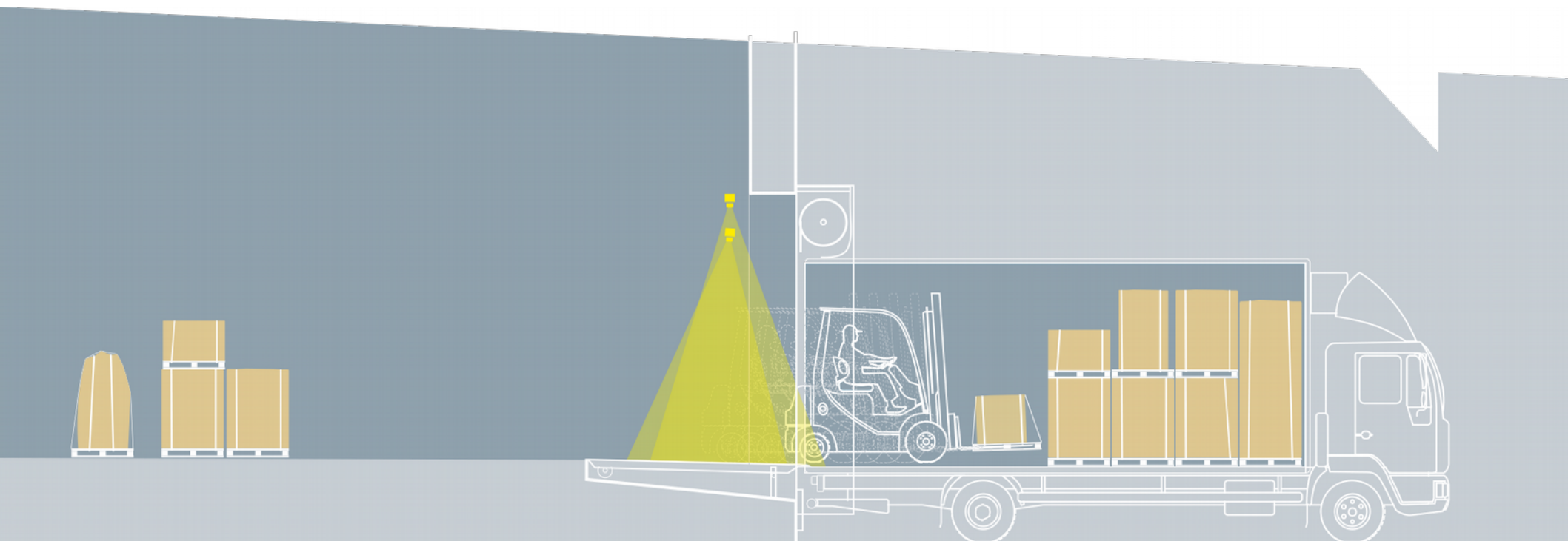
„On-the-fly“ measurement

# CARGOMETER



„On-the-fly“ measurement

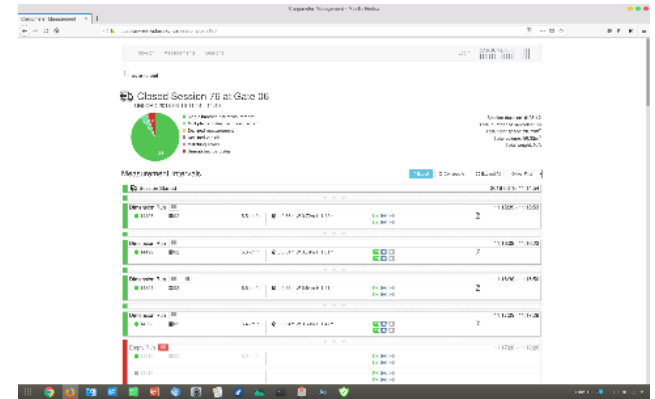
# CARGOMETER



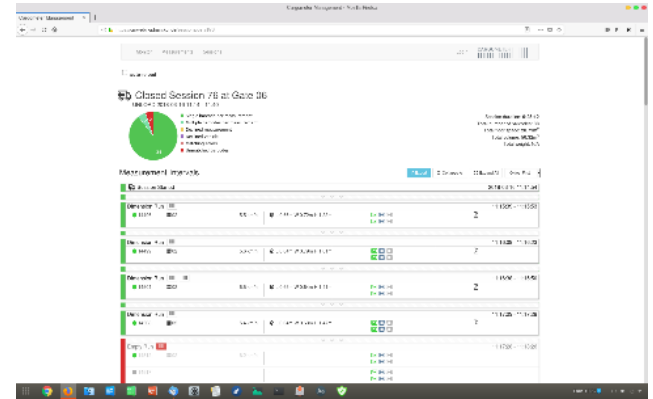
„On-the-fly“ measurement



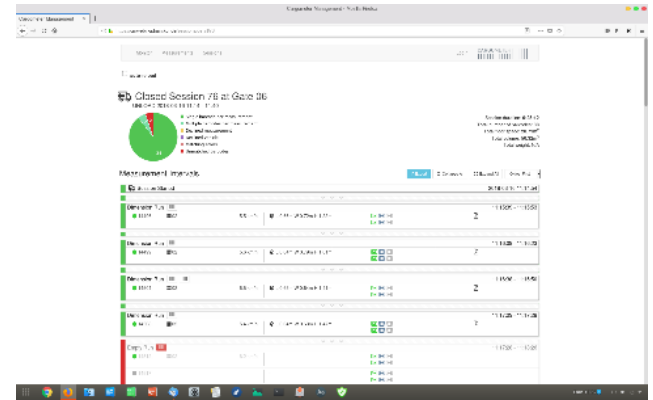
# Module: DIM - Dimension-in-Motion



# WIM - Weigh-in-Motion



# SIM - Scan-in-Motion



# Permanente Vermessung erzeugt Wissen ...



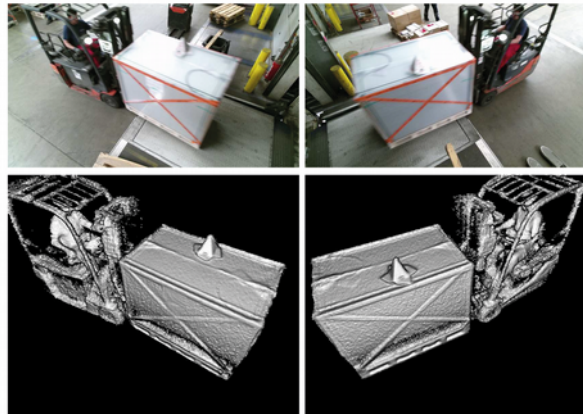
## CARGOMETER-Report

Volume in Motion 1.7.1


Module: RGB, Reporting, UNIMATCH, XL

Messung DBSDE01471\_03\_20180611T100701.106

Standort	DBSDE01471			
Tor	03			
Messzeitpunkt	2018-06-11 10:07:01 UTC			
Flurförderzeug	11			
Richtung	ENTLADEN			
Geschwindigkeit	5,8 km/h			
Dimensionen	Länge	Breite	Höhe	Volumen
Brutto	1,72 m	1,06 m	1,66 m	3,03 m <sup>3</sup>
Gewicht [ Brutto ]	66,0 kg			

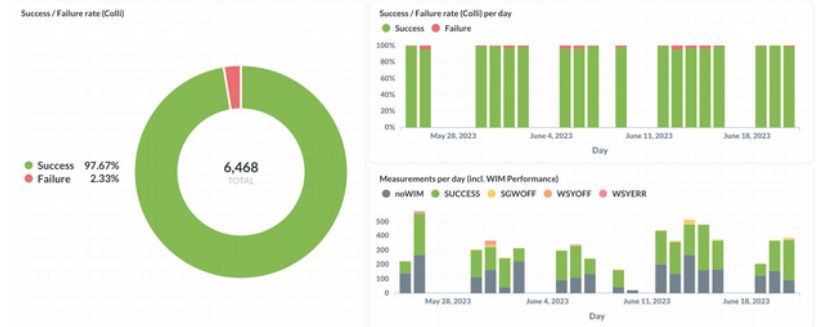


### Packstückdaten

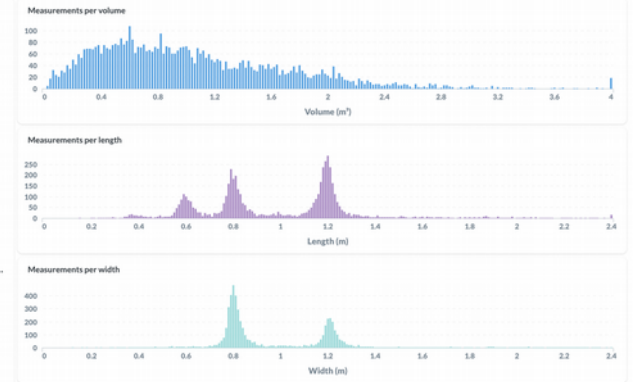
HPO		
Sendungsnummer		
Packstücknummer	49503712810992801011002001	
Absender	-	
Empfänger	-	



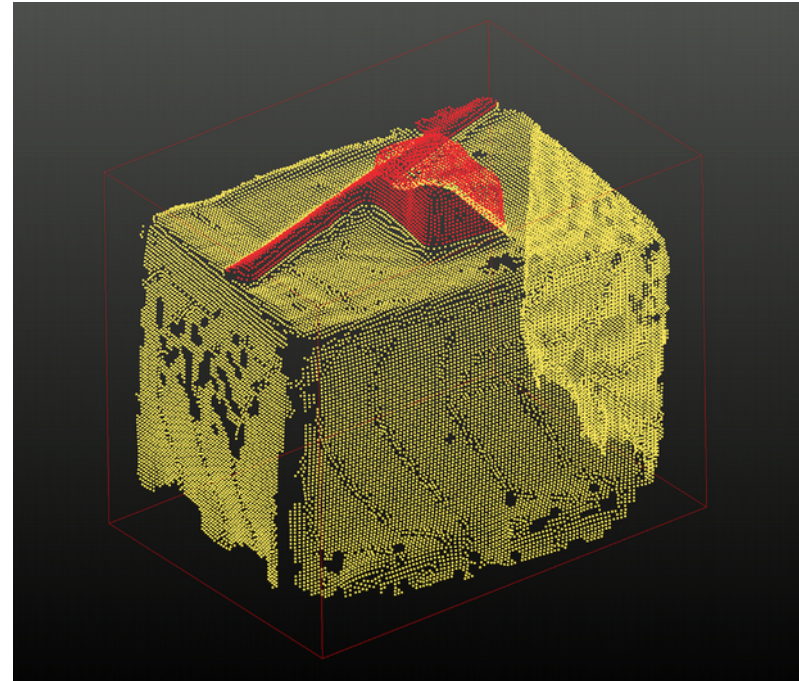
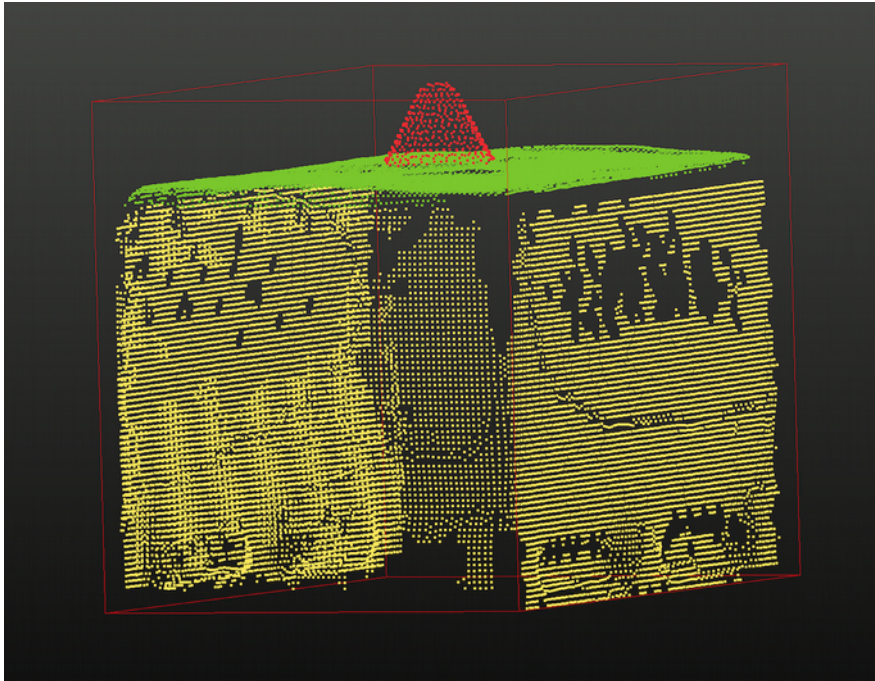
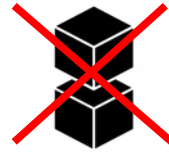
Und hilft zu optimieren!



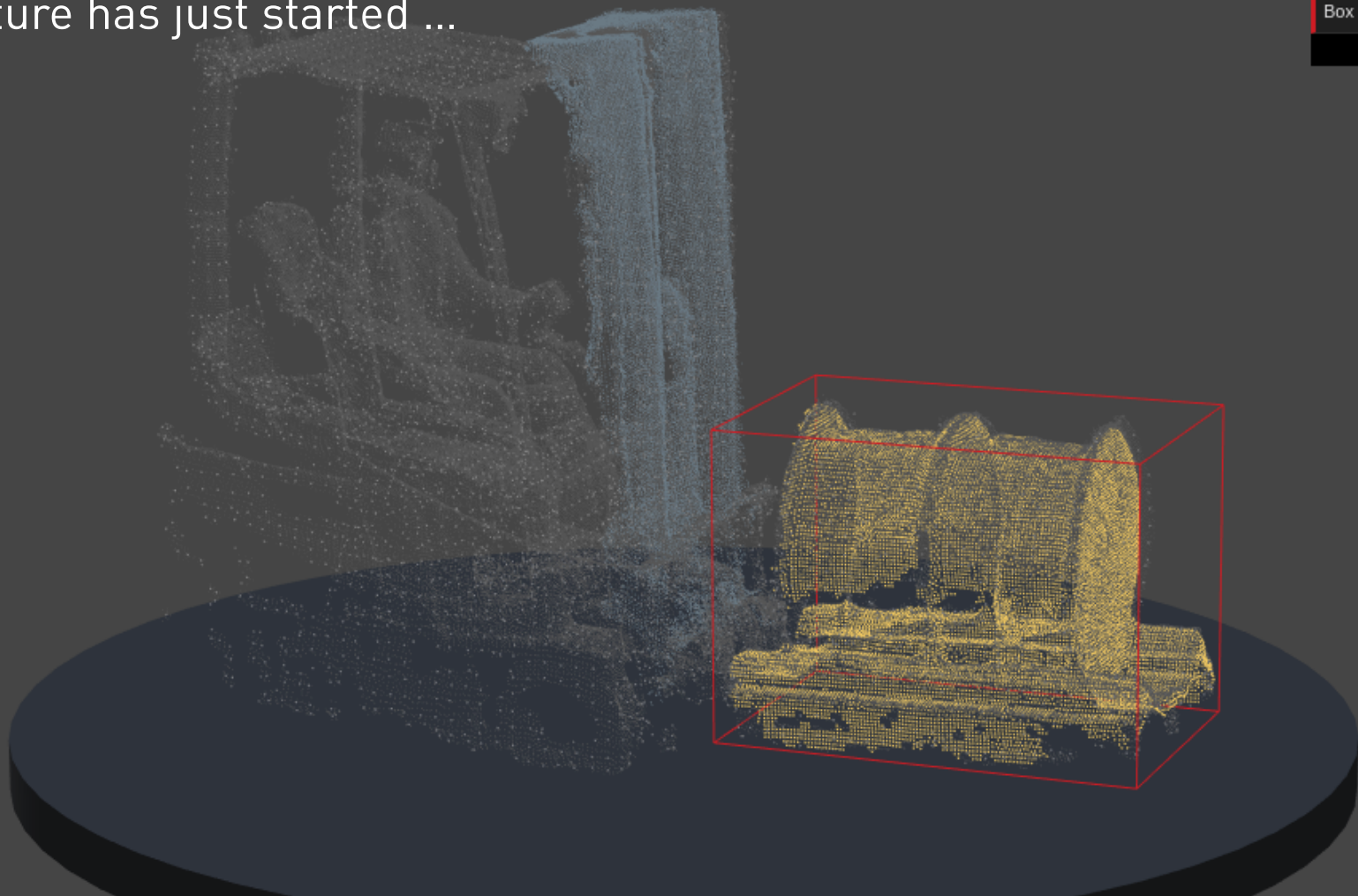
**1.05 m<sup>3</sup>**  
Average volume per measureme...



# Vermessung der Verladeoptimierungen



The future has just started ...



Vehicle (high-res)

Pole

Cargo

Box

Close Controls



## Vortragender

**Dr. Bernhard Obermaier**  
obermaier@cargometer.com  
+43 664 8467670

**CARGOMETER GmbH**  
Gutheil-Schoder-Gasse 10  
1100 Wien

Telefon Wien:  
+43 1 934 6664 -10

[www.cargometer.com](http://www.cargometer.com)

